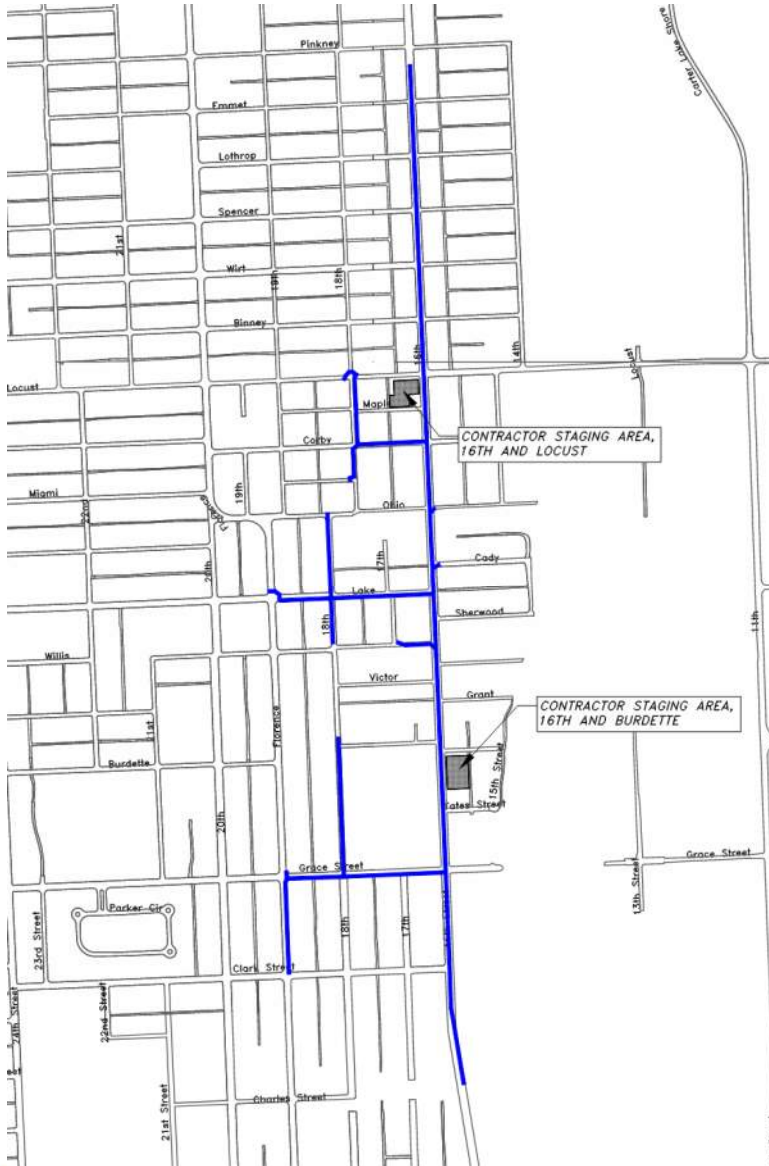


OPW53753 NICHOLAS STREET SEWER EXTENSION – PHASE 3B



CONTRACTOR MEETINGS MAY 2020

Project Area



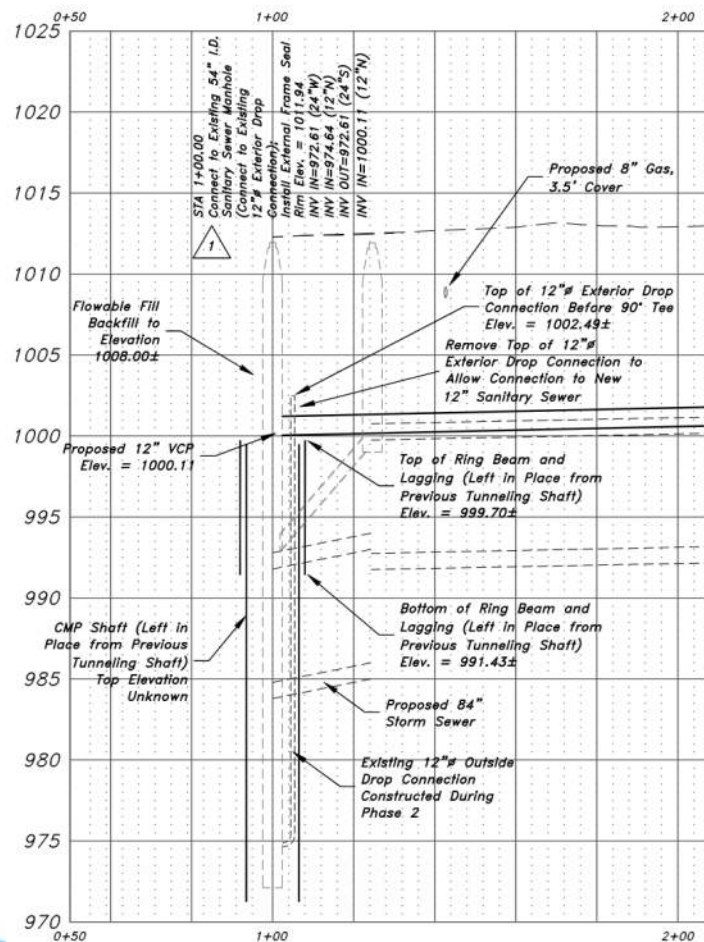
- Pavement Removal
- Sanitary Sewer
 - Downstream Connection
- Storm Sewer
 - Downstream Connection
- Pavement Replacement
- Traffic Signals
- Landscape Restoration

Project Scope - Sewers

- Sanitary Sewer
 - 16th Street
 - 6,225 LF 12" VCP
 - Same Alignment as Existing
 - Replaces 8" VCP Constructed in the 1880s
 - Typically 12' Deep
 - Downstream Connection to Existing at Charles
 - Exterior Drop Connection at Grace
 - Willis & Corby
 - 700 LF 8" VCP

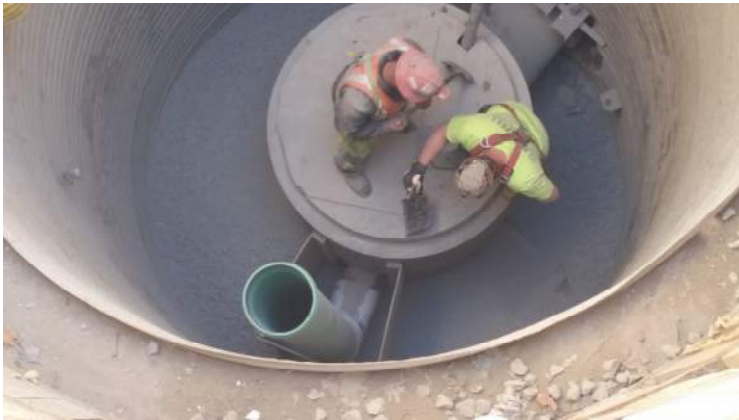
Project Scope - Sewers

- Sanitary Sewer
 - Downstream Connection to Existing at Charles



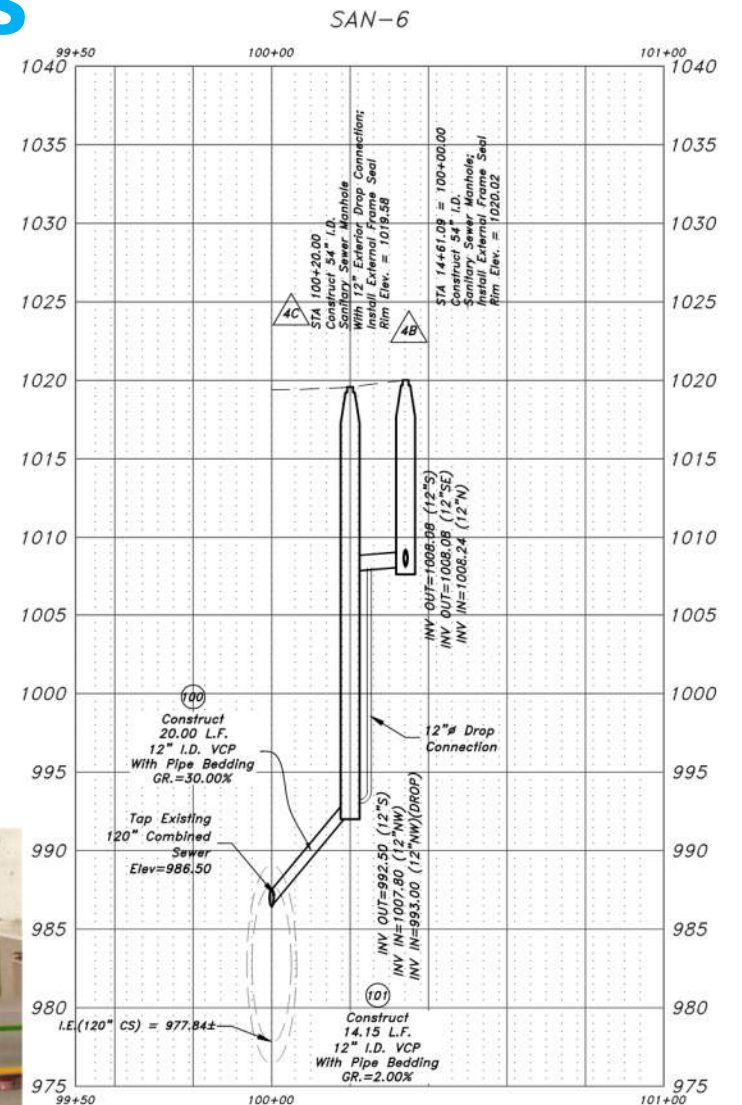
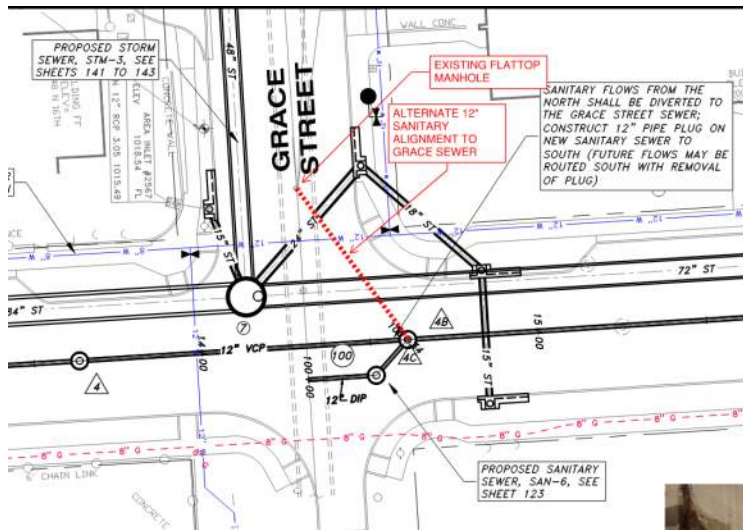
Project Scope - Sewers

- Sanitary Sewer
 - Downstream Connection to Existing at Charles



Project Scope - Sewers

- Sanitary Sewer
 - Exterior Drop Connection at Grace



Project Scope - Sewers

- Storm Sewer
 - 16th Street
 - 15" to 84" RCP – Open Cut
 - Inlet Laterals Throughout
 - Depth Varies - Typical 20' at Southern End
 - Downstream Connection to Existing Structure at Charles
 - Large Manholes (96" & 120" rather than Structures)
- Storm Sewer
 - Corby, Lake, Grace, 18th & Florence
 - 15" to 48" RCP – Open Cut

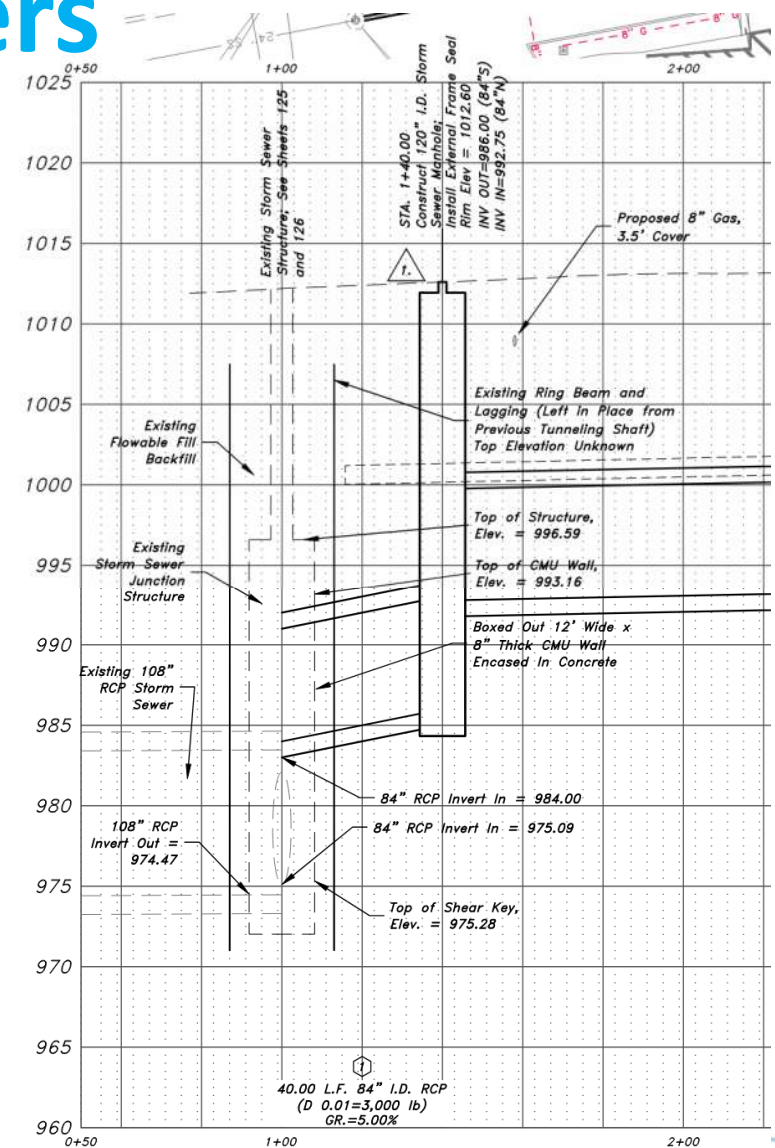
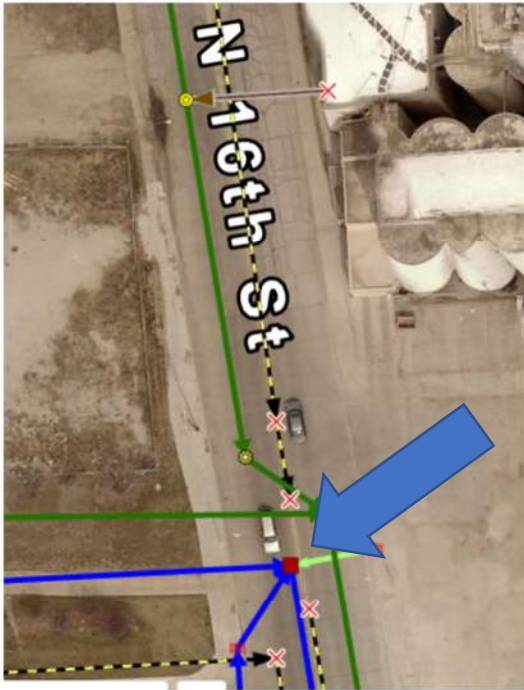
Project Scope - Sewers

- Storm Sewer Quantities

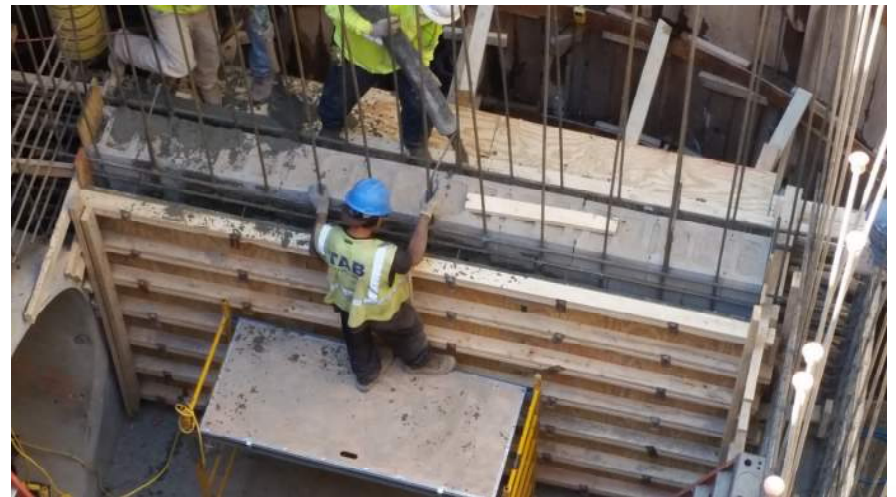
- 84" – 40 lf (d 0.01 = 3,000 lb); **1275 lf** (d 0.01 = 2,000 lb)
- 72" – 1685 lf (d 0.01 = 2,000 lb)
- 60" – 230 lf (d 0.01 = 1,350 lb)
- 54" – 325 lf (d 0.01 = 1,350 lb)
- 48" – 590 lf (d 0.01 = 2,000 lb); **365 lf** (d 0.01 = 1,350 lb)
- 36" – 395 lf (d 0.01 = 2,000 lb); **1100 lf** (d 0.01 = 1,350 lb)
- 30" – 1660 lf (Class III)
- 24" – 275 lf (Class IV); **2585 lf** (Class III)
- 18" – 1210 lf (Class III)
- 15" – 2205 lf (Class III)

Project Scope - Sewers

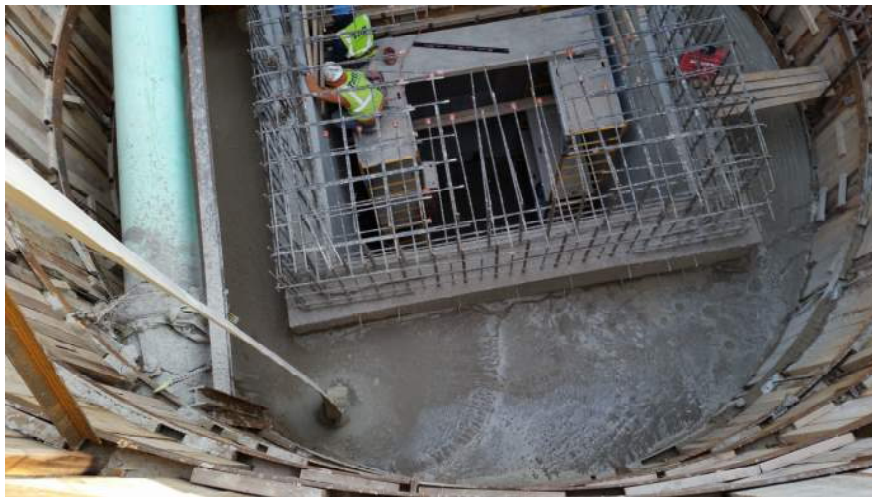
- Storm Sewer
 - Connection at Charles



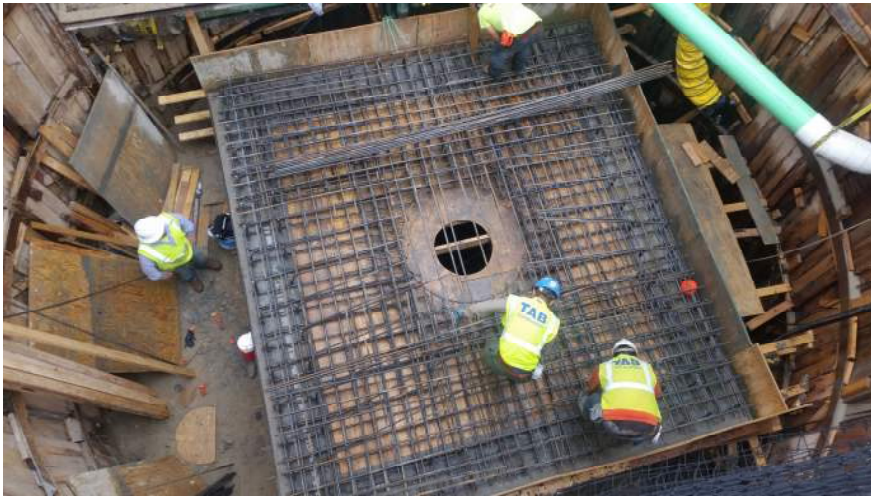
Project Scope - Sewers



Project Scope - Sewers

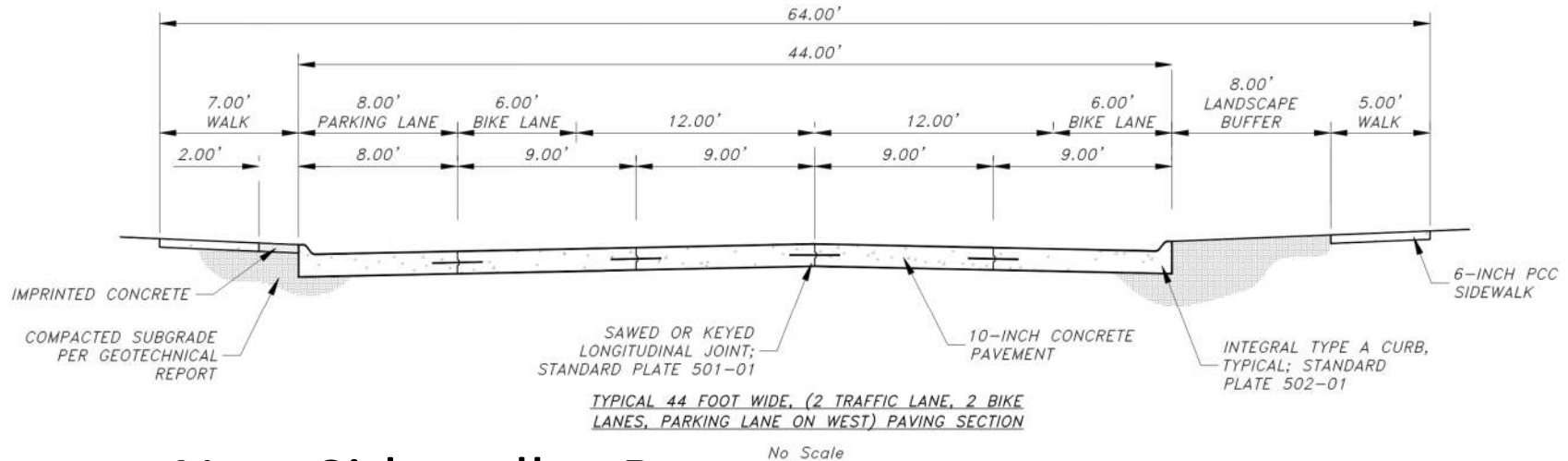


Project Scope - Sewers



Project Scope - Streets

- 16th Street
 - Full Pavement Removal (Including Sidewalks)
 - 10" Concrete; Pavement Narrowing



- New Sidewalks, Ramps
- Traffic Signal Replacement
 - 16th/Lake & 16th/Locust

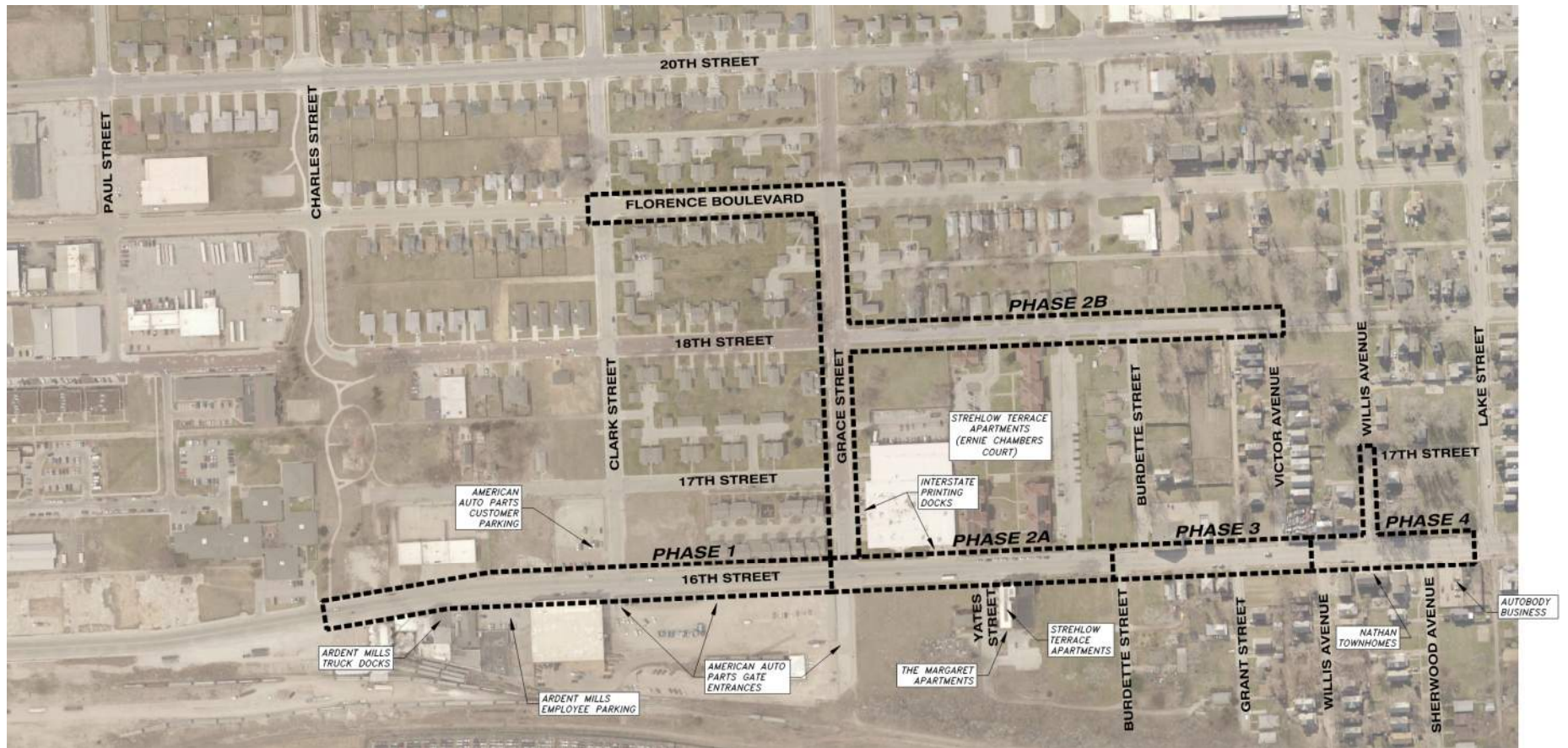
Project Scope - Streets

- Corby, Willis, Lake, Grace, 18th & Florence
 - Full Pavement Removal (Including Sidewalks)
 - 7" Concrete; 10" Concrete – Lake & Grace
 - New Sidewalks, Ramps
- Pavement
 - 10" PC Street Paving – 41,000 SY
 - 7" PC Street Paving – 9,000 SY
 - 7" PC Driveway – 3,000 SY
 - 6" PC Sidewalk – 100,000 SF
 - 6" Ramps – 8,000 SF
 - 6" Imprinted – 11,000 SF

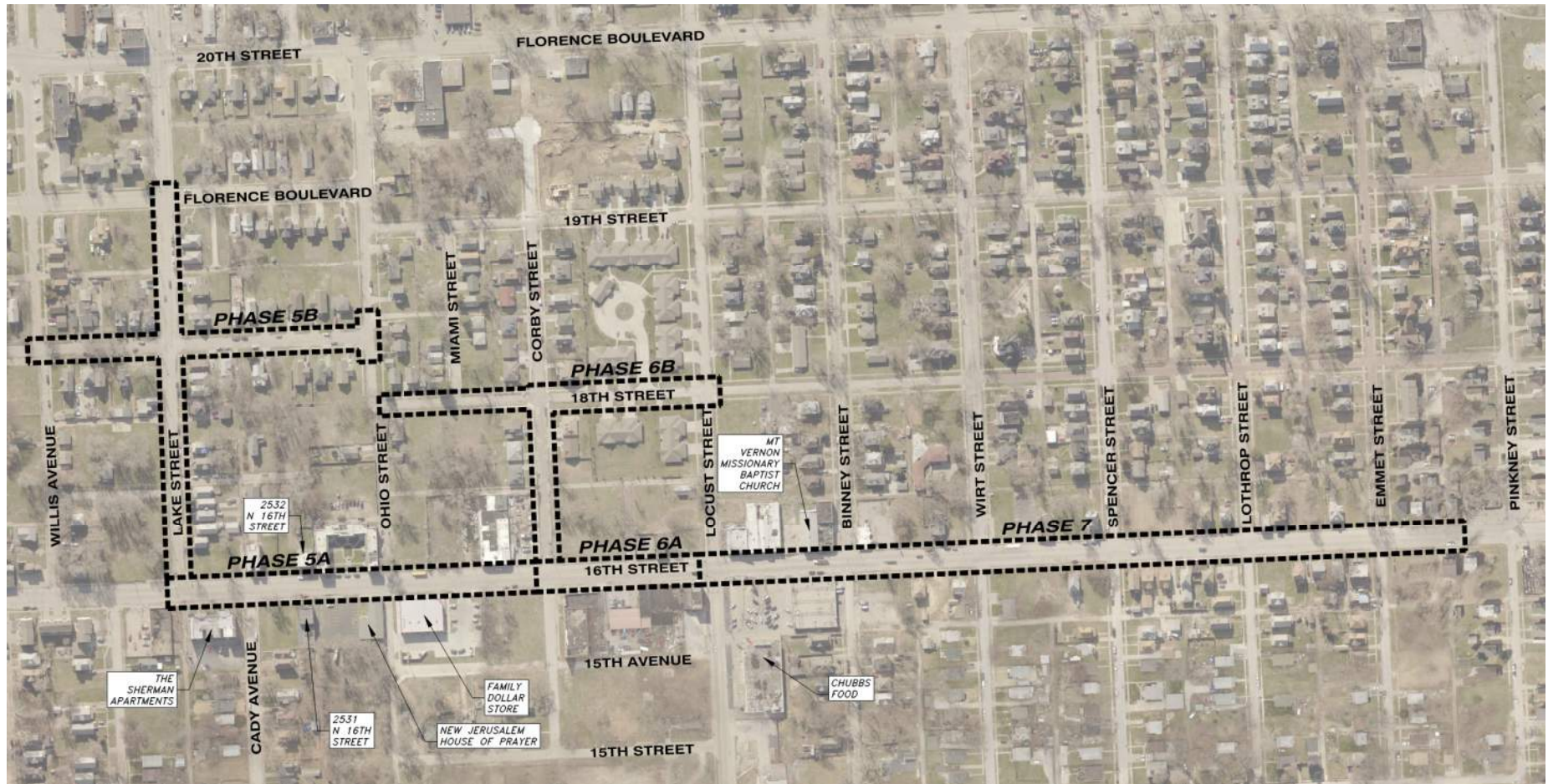
Project Scope - Landscaping

- Landscaping Restoration
 - Soil Restoration
 - Sod
 - Seeding / Rolled Erosion Control

Project Scope - Phasing



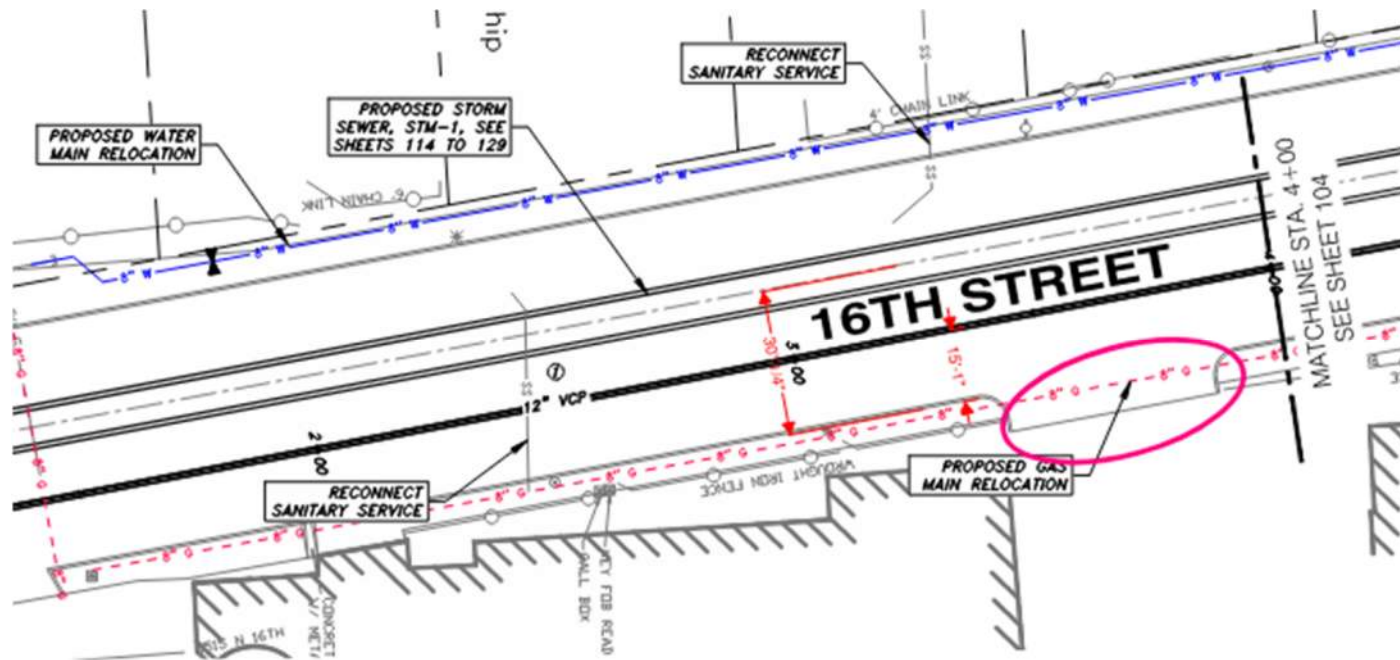
Project Scope - Phasing



Project Scope – Ardent Mills Docks

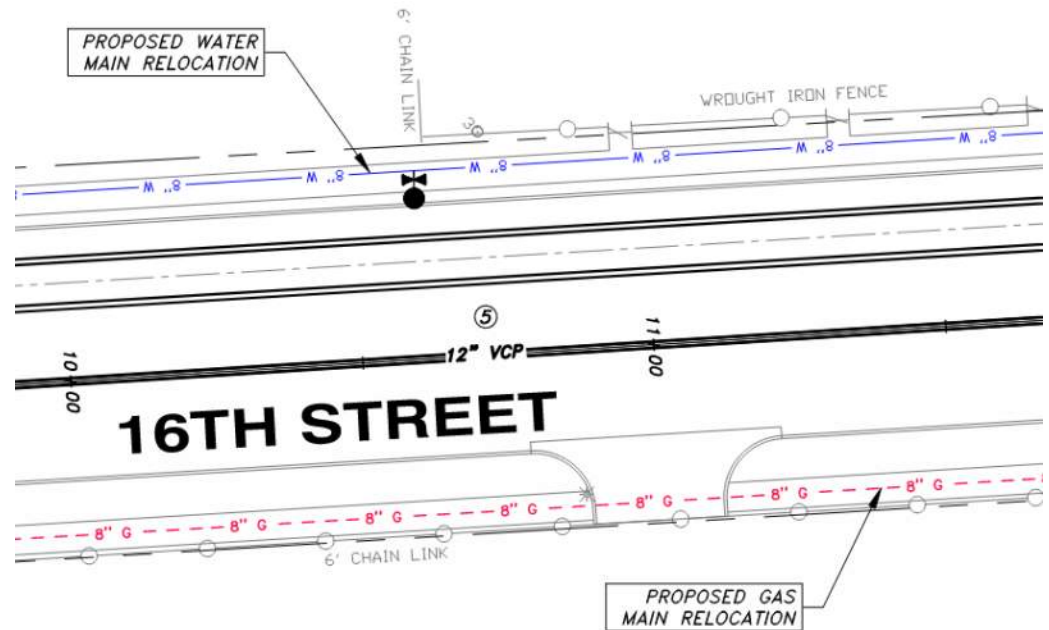


Project Scope – Ardent Mills Docks



Joint Contracting

- Gas Design and Construction by MUD – 2020
- Water Design by MUD
- Water Incorporated into Contract Documents
 - Primarily 6" and 12"
 - Under Sidewalk
 - Gas
 - East/South
 - Water
 - West/North



Project Schedule

- Advertising / Bid Opening – Fall / Winter 2020
- Begin Construction – Spring / Summer 2021
- Complete Construction – Spring / Summer 2023